

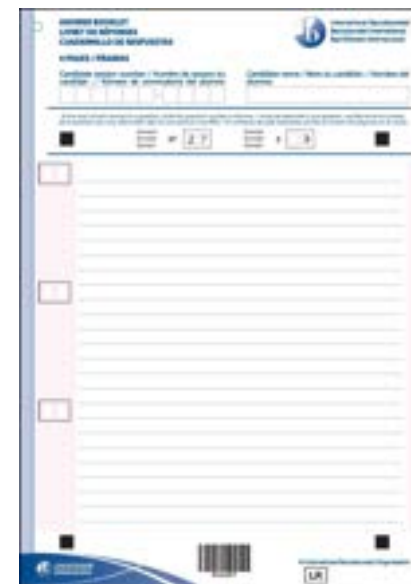
## Some important advice

- ✓ Know your candidate session number.
- ✓ Read the IB poster *Conduct of the examinations: notice to candidates*. If you have any questions about what it says, ask your coordinator.
- ✓ Take only authorized material into the examination room. If you are found in possession of unauthorized material (for example, notes, a mobile/cell phone) even by mistake, you will be in breach of the IB regulations.
- ✓ Write in dark blue or black ink only. Do not use gel pens. The use of colour is only permitted in geography examinations.
- ✓ Draw a line through any plans or working out that you do not want marked.
- ✓ At the end of the examination, place the below material (where applicable) together in the following sequence:
  - the blue coversheet at the front
  - the examination paper (but **only** if this is the kind of examination paper in which you write answers)
  - the answer booklet(s)
  - squared paper (used in Chinese/Japanese language examinations)
  - graph paper

Secure the above material together with a string tag.



## Answer Booklet Guide



### Introduction

This guide has been produced to help you as a candidate become familiar with using answer booklets in IB Diploma Programme and Career-related Programme examinations.

#### What does the answer booklet look like?

Each booklet consists of four pages. On the top of the front page there are sections in which to indicate your session number and name, along with brief instructions on how to correctly write question numbers. The remainder of this page and all other pages are for you to write your answers to examination questions. Please remember to write your answers on the lines, keeping within the large pink box on each page. Beside the lines for your answers are boxes in which you must write the number of each question you answer.

